

# Radiology

DRS. LISA FORREST, KEN WALLER, SAMANTHA LOEBER, JR  
LUND, DARREL YAP, SARA TOLLIVER





# Core Radiology

- ▶ Offered throughout the year
- ▶ Rotation Emphasis
  - ▶ Technical
  - ▶ Image Interpretation
  - ▶ Introduction to Ultrasound
- ▶ Required for All
- ▶ Best time to take
  - ▶ Early for Intern Candidates & before externships
- ▶ Clinic Schedule – M-F, 8:00 to 5:30
- ▶ Outpatients & Inpatients



# Core Radiology

## ▶ What to Expect

- ▶ Patient positioning for imaging studies
- ▶ Perform Radiography
  - ▶ Critique technique
  - ▶ Image interpretation
- ▶ Make presentations
- ▶ Receiving: M – F, all day
- ▶ Service Specific Clinical Work Expectations:
  - ▶ Facilitate radiography and ultrasound throughput
  - ▶ Necropsy presentations

## ▶ What to Expect (continued)

- ▶ On Call Schedule ICU/Sx
  - ▶ Evenings & Weekends
- ▶ Study Expectations
- ▶ Thrall Textbook - Required
  - ▶ Preparation for Rounds
  - ▶ Radiology/Pathology Presentation
  - ▶ Quizzes



# Radiology – Directed Study

- ▶ Rotation Emphasis: Student dependent
- ▶ When: After core rotation
- ▶ Recommend: contact radiology faculty member
  - ▶ Your goals
    - ▶ Specific project
    - ▶ More experience evaluating images
      - ▶ Go through list of interesting cases
        - ▶ Write your report & then compare with finalized report
        - ▶ Use Thrall and other textbooks



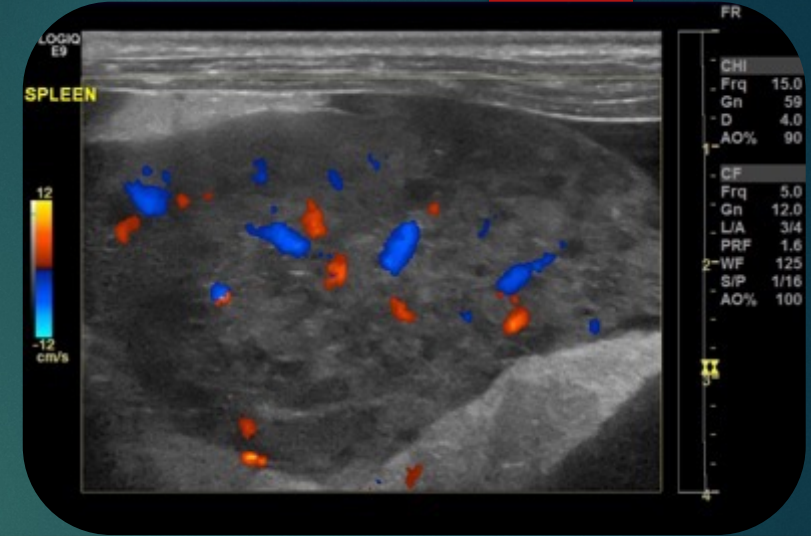
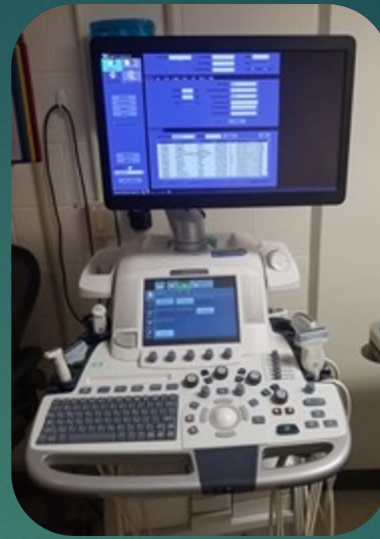
# Radiology – Directed Study (cont.)

- ▶ What you should expect, dependent on choice:
  - ▶ Identify project with faculty member
    - ▶ Organize and plan prior to DS
  - ▶ More imaging experience
    - ▶ Independent image evaluation and reading



# Ultrasound Elective

- ▶ Offered year-round
- ▶ Rotation emphasis:
  - ▶ Hands-on experience
  - ▶ Technical parameters
  - ▶ Image interpretation
- ▶ Recommended for: Small Animal & Mixed
  - ▶ Students interested in additional hands-on US experience
- ▶ Best time to take:
  - ▶ Early for intern candidates & before externships
  - ▶ Near graduation to refine skills (can take multiple times)
- ▶ Clinic schedule: 1 week, M-F 8:30am-5:30pm
- ▶ Outpatient & Inpatient
- ▶ Weekend duty: None assigned





# Ultrasound Elective

- ▶ What should you expect to do:
  - ▶ Evaluate US exams on SA patients
  - ▶ Perform US exams on non-critical patients
  - ▶ Discuss US cases with radiologists
  - ▶ Complete Ultrasound Assignment Presentation
- ▶ Organization of receiving:
  - ▶ Dependent on US requests submitted from SA services
- ▶ Service Specific Clinic Work expectations:
  - ▶ Facilitate completion of clinical US patient load
  - ▶ Actively participate in US examinations
- ▶ On-Call Schedule/ICU:
  - ▶ None
- ▶ Study Expectations:
  - ▶ Become familiar with basic US physics and common US artifacts
  - ▶ Recognize normal anatomy and disease on US
  - ▶ Review US cases and study material relevant to cases
  - ▶ Preparation for rounds
  - ▶ Complete US test